



# WMF COFFEE MACHINES

## Base Information

### WMF bistro! Type 8400



*bistro!*

### WMF bistro! Type 8400

Application

Espresso, Milky Coffee and Hot Chocolate  
Steam and Hot Water for Tea

Capacity

For Outlets above 200 Cups/Day

Service Period

Approximately 40,000 brewing

The new WMF bistro! offers you a selection of 16 different specialities – at the touch of a button. The keys and quantities are freely programmable to suit your particular requirements. The extended selection increases your product range and thus, naturally, your sales potential. The spout height is adjustable up to 170 mm to allow even tall jugs to be filled with delicious coffee. Your customers want MORE every day, so why should you be satisfied with less? Each customer likes their coffee a certain way, whether strong, normal or mild. The new WMF bistro! makes it easy for you to satisfy every requirement: straightforward selecting and setting options via the touch screen display allow perceptibly more individuality. The coffee strength, cup size and water quantity are indicated in an intuitive guide. The result: coffee from the new WMF bistro! simply tastes of MORE

## TECHNICAL DATA

Standard Models	3.3 kW	6.3 kW
Hourly Output	Espresso 300 Cups/h	300 Cups/h
	Café Crème 200 Cups/h	220 Cups/h
	Cappuccino 200 Cups/h	220 Cups/h
	Choc (optional) 120 Cups/h	120 Cups/h
Product Containers	Coffee Bean Hopper (1 optional 2) 1 kg	
	Choc Powder (optional) 500g to 1 kg (depending on Powder)	
Dimension	Height x Width x Depth 733 x 450 x 555 mm	
	Weight ~ 80 kg	
Connections	Power Supply 1P/N/E 230 V 50/60 Hz	3P/N/E 400V 50/60 Hz
	Water Supply 1/2" (minimum 1.5 bar)	
	Drainage 25 mm	
Options	Steam Power NO	YES
	Milk Power YES	YES
	Mobile Station YES	NO
	Cup Rack YES	YES
	Cup Et Cool YES	YES

WMF AG Coffee Machines International 73312 Geislingen/Steige, Germany

Phone +41 7331 258482 Fax +41 7331 258792, Mail: professional@wmf.com, Web: http://www.wmf.com

Service Agent: RICMAS International Pte. Ltd. 25 International Business Park, German Centre #01-07/10, Singapore 609916

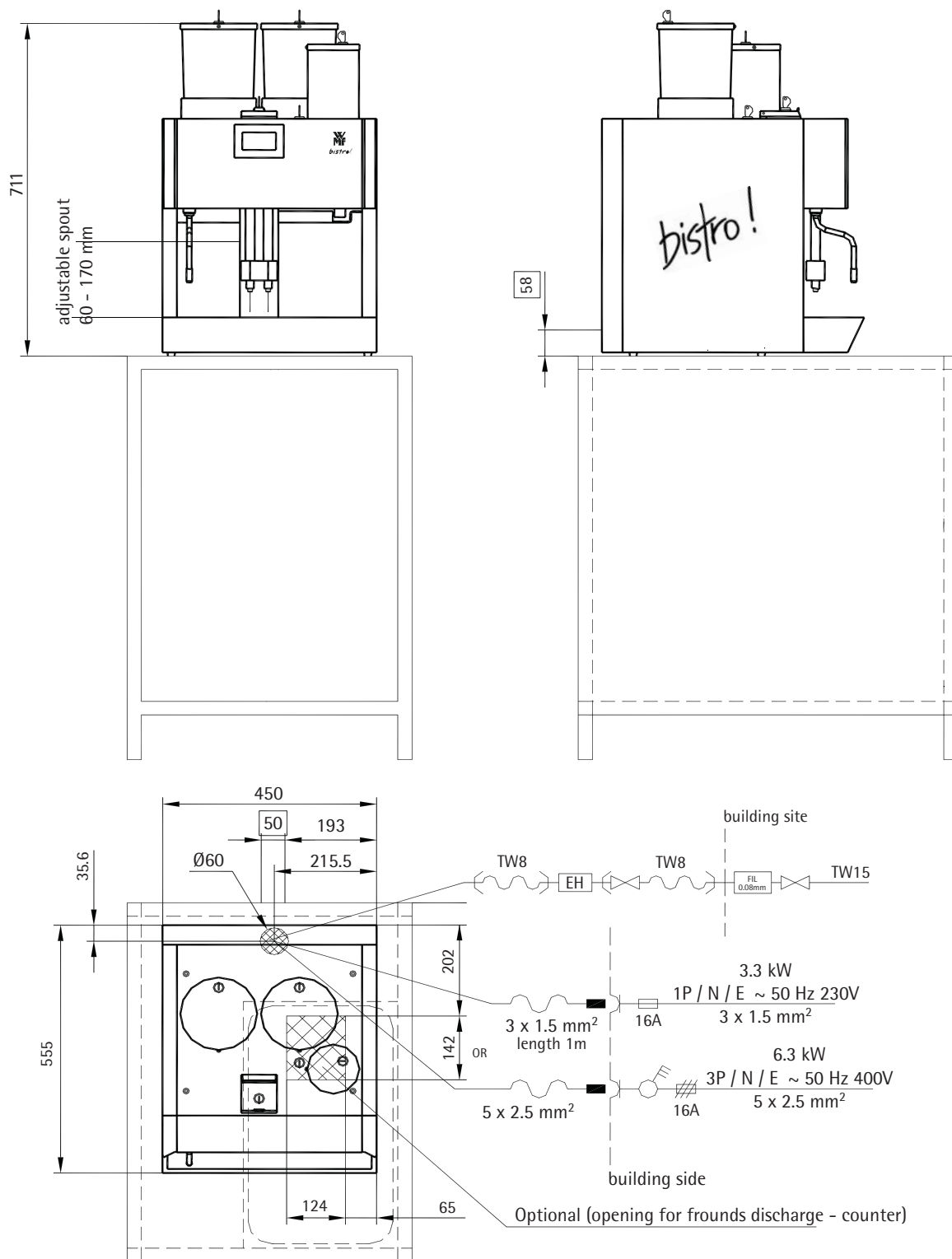
Phone: +65 65628853, Fax: +65 65628854, Mail: wmf@ricmas.com, Web: http://www.ricmas.com



# WMF COFFEE MACHINES

## Planing Information

### WMF bistro! Type 8400





# WMF COFFEE MACHINES

## Data Sheet

### WMF bistro! Type 8400

Brewing process:	speciality coffees and drinking chocolate with and without addition of milk
Output per hour:	200 - 220 cups of café crème, 300 cups of espresso, 200 cups of cappuccino, 120 cups of drinking chocolate, 24 or 48 L hot water depending on connection 3.2 kW single Phase or 6.2 kW three Phase
Option:	cashless billing with cards, bank card reader or coin checker/coin changer
Accessories:	automatic foamer rinsing, chocolate powder dispenser water filter, building-side sediment trap (roller bins etc.)
Water connection:	1/2" (TW 15)
Flow pressure:	min. 0.2 MPa at 2 L min.
Degree of protection:	IPX0
Protection class:	Protection class I
Perceptible heat emission:	0.16 kWh/h in standby mode for all types with rated power 3.3 kW 0.16 kWh/h in standby mode for all types with rated power 6.3 kW
Perceptible heat emission:	3.28 kWh/h in maximum mode for all types with rated power 3.3 kW 6.12 kWh/h in maximum mode for all types with rated power 6.3 kW
Cont. sound level (Lpa)	< 70 dB (A)
Miscellaneous:	coffee machine with dry residue discharge into an integrated drawer, optional with sediment discharge into a building-side container below the counter
Drain:	DN 19, gradient at least 2%
Empty weight:	ca. 80 kg